

Light efficiency:

77 Lumen/Watt

Light quality:

CRI: 81.4

Color temperature:

3055 K

Output: 3131 lm

Peak: 8717 cd

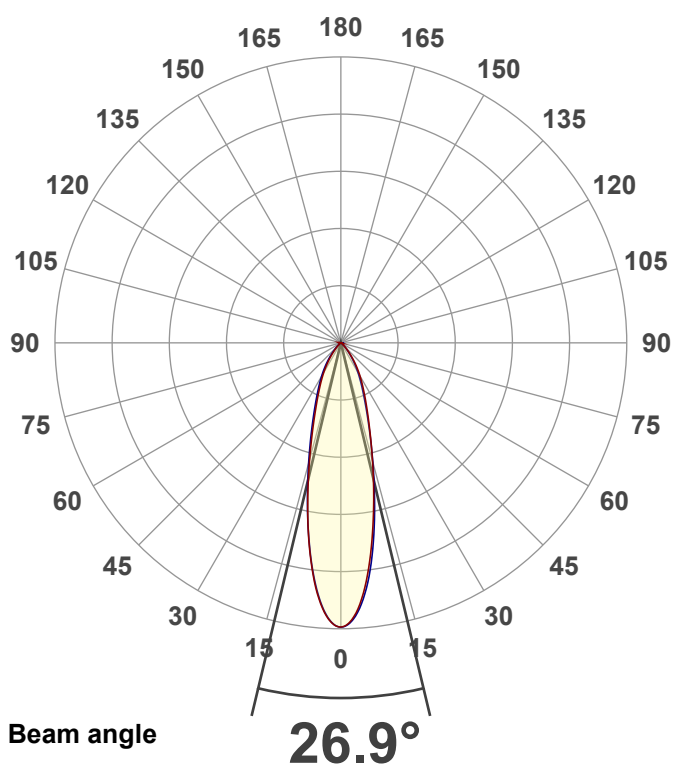
Power: 40.9 W

PF: 0.99



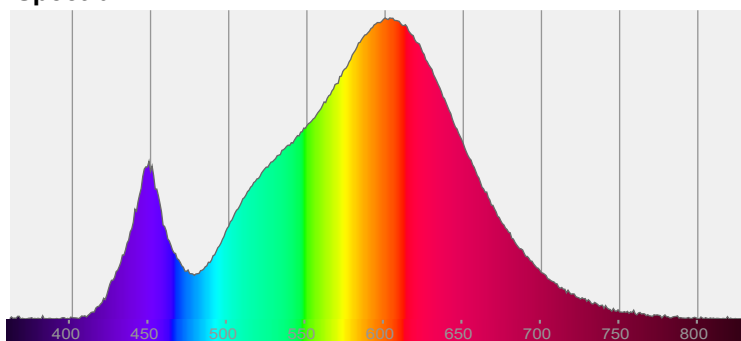
NU3-RD-SW-40LM-30K-80-25D-HET-WH-WH

Date and time:  
2/21/2023 8:51:25 AM

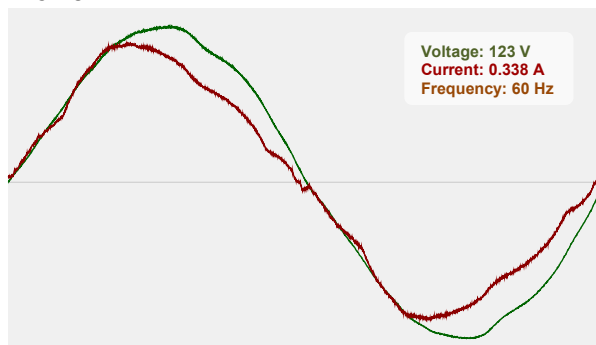


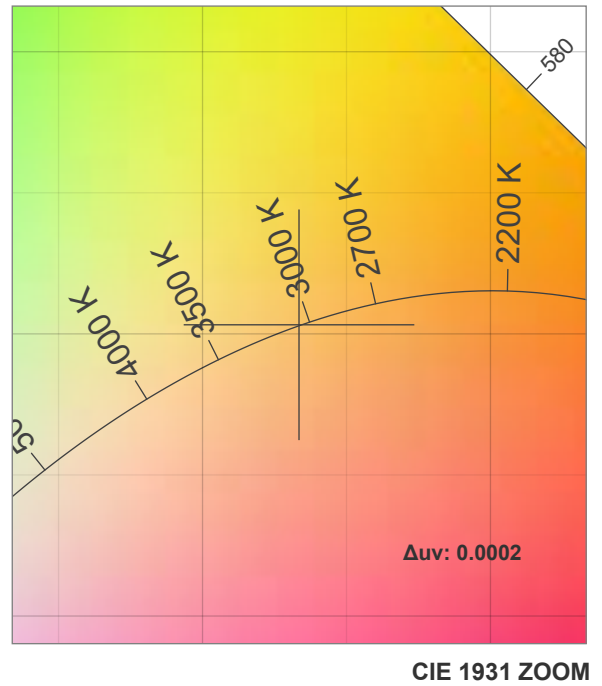
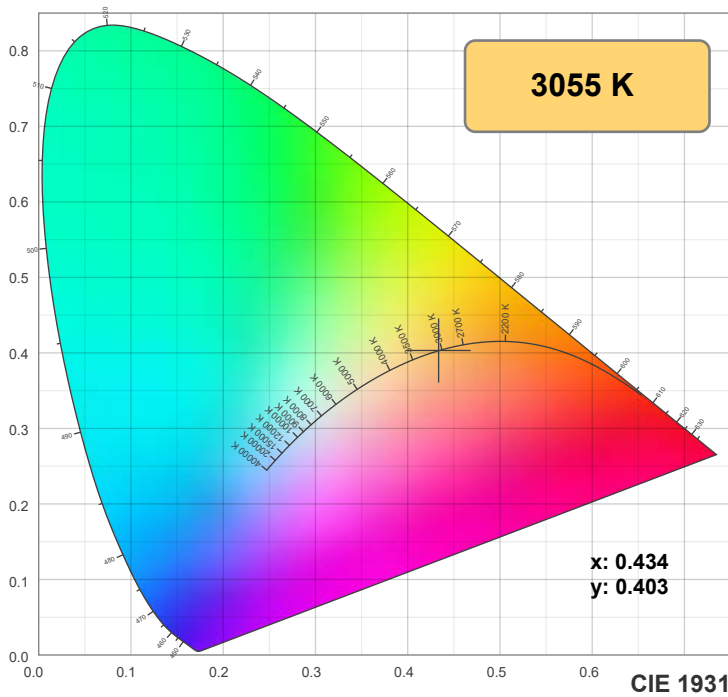
CIE 1931  
x: 0.434  
y: 0.403

Spectra

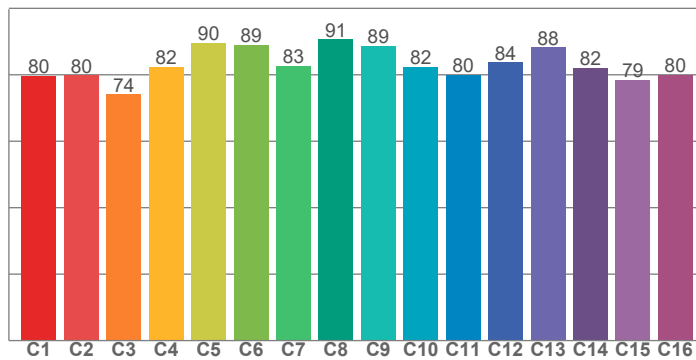


Power

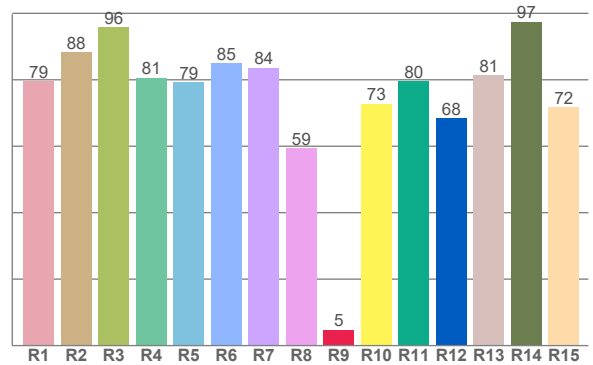




**TM30: 83.1**



**CRI: 81.4 (R1-R8)**



CRI R values, only R1-R8 are used to calculate final CRI value

R1	R2	R3	R4	R5	R6	R7	R8	R9	R10	R11	R12	R13	R14	R15
79.5	88.2	95.7	80.6	79.2	85.0	83.6	59.5	4.7	72.8	79.6	68.4	81.3	97.5	71.7

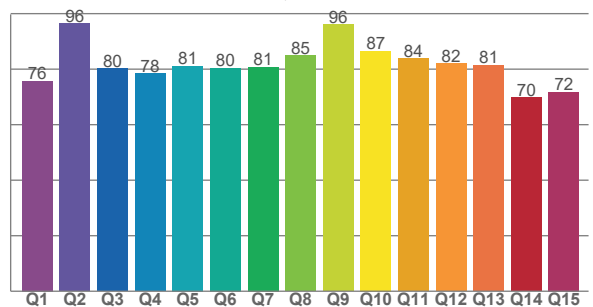
TM30 C values, 16 binned values out of total of 99 C values

C1	C2	C3	C4	C5	C6	C7	C8	C9	C10	C11	C12	C13	C14	C15	C16
79.7	79.8	74.0	82.3	89.5	89.0	82.6	90.7	88.7	82.3	79.9	83.7	88.3	82.1	78.6	80.0

CQS Q values

Q1	Q2	Q3	Q4	Q5	Q6	Q7	Q8	Q9	Q10	Q11	Q12	Q13	Q14	Q15
75.8	96.5	80.3	78.5	81.1	80.4	80.8	85.0	96.1	86.6	83.8	82.0	81.4	69.8	71.7

**CQS: 80.5**



## Color parameters

Color temperature	Color rendering index	Red component	Color fidelity	Color gamut	Color quality scale	Color coordinate cie 1931	Color coordinate cie 1931	Color coordinate	Color coordinate	Color deviation from black body
CCT	CRI	CRI R9	TM30 Rf	TM30 Rg	CQS	x	y	u	v	Δuv
3055 K	81.4	4.7	83.1	97.7	80.5	0.434	0.403	0.249	0.347	0.0002

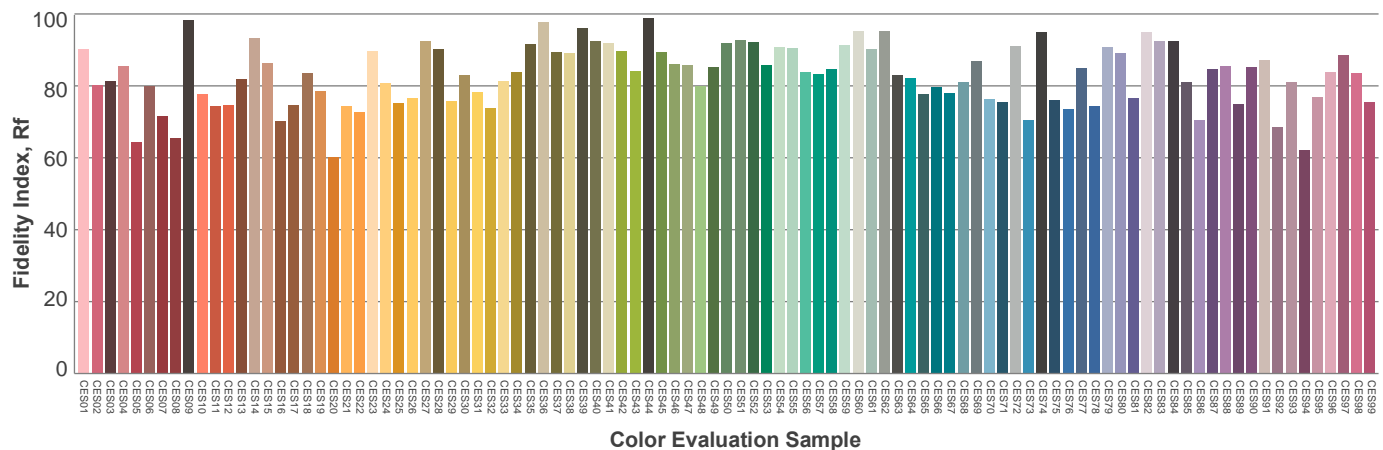
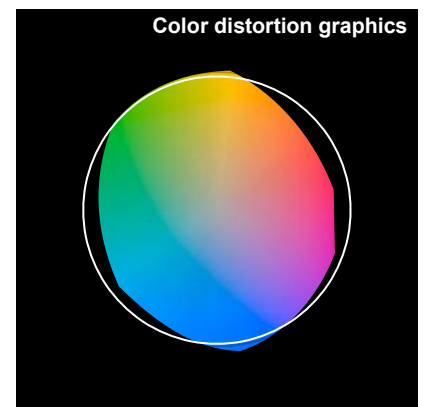
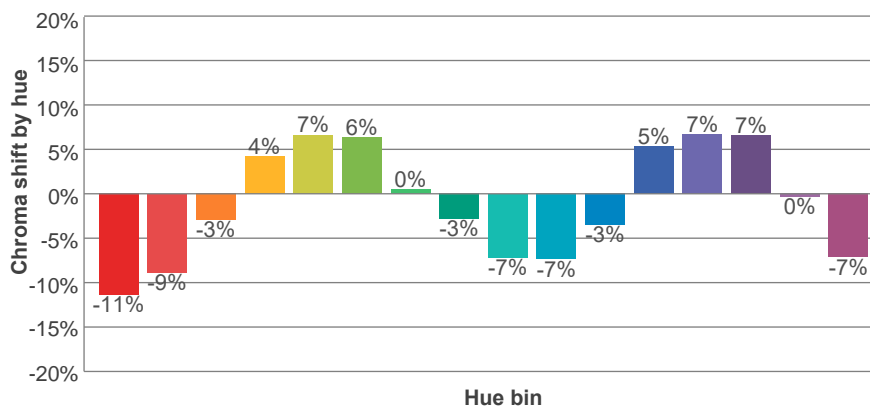
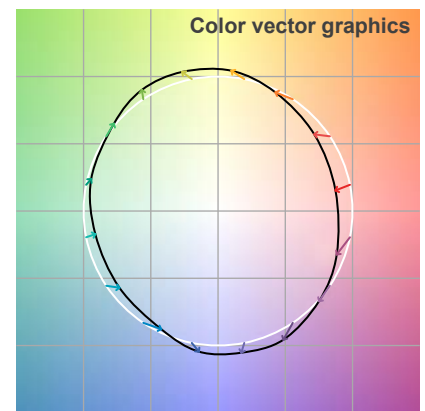
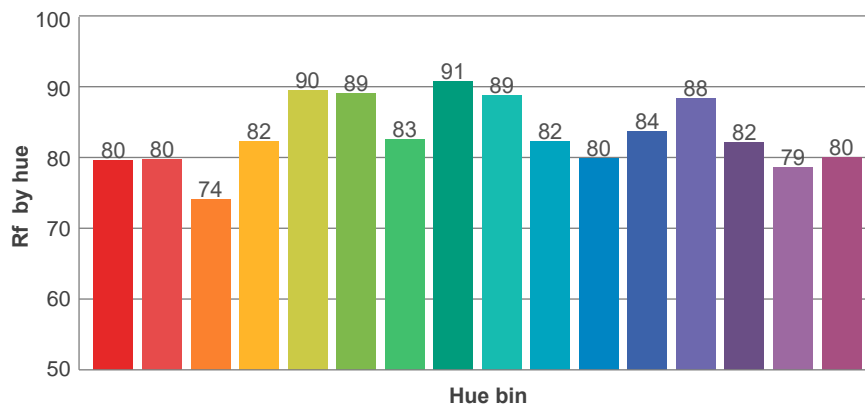
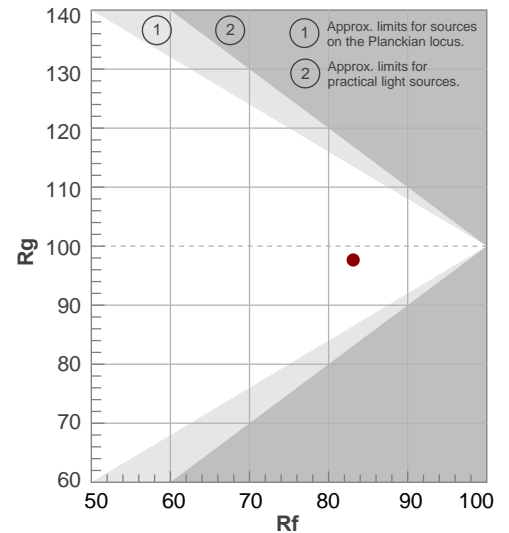
**Rf 83.1**

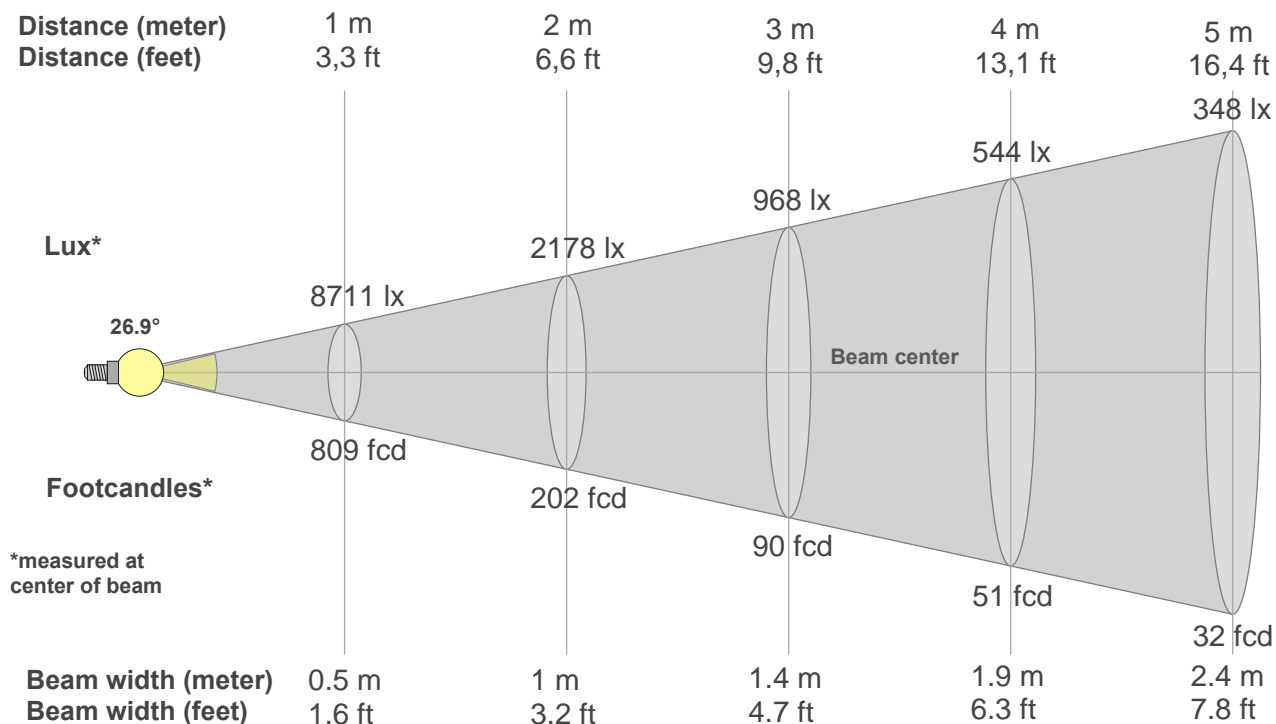
Fidelity index Rf

**Rg 97.7**

Gamut index Rg

Hue Bin	R <sub>f</sub>	Graphic shifts (%)	
		Chroma	Hue
1	80	-11%	-2%
2	80	-9%	8%
3	74	-3%	14%
4	82	4%	11%
5	90	7%	6%
6	89	6%	-3%
7	83	0%	-11%
8	91	-3%	-5%
9	89	-7%	-1%
10	82	-7%	7%
11	80	-3%	14%
12	84	5%	6%
13	88	7%	-4%
14	82	7%	-13%
15	79	0%	-14%
16	80	-7%	-14%





#### Beam intensities from 1-20m

1m	2m	3m	4m	5m	6m	7m	8m	9m	10m	11m	12m	13m	14m	15m	16m	17m	18m	19m	20m
3.3ft	6.6ft	9.8ft	13.1ft	16.4ft	19.7ft	23ft	26.2ft	29.5ft	32.8ft	36.1ft	39.4ft	42.7ft	45.9ft	49.2ft	52.5ft	55.8ft	59.1ft	62.3ft	65.6ft
8711lx	2178lx	968lx	544lx	348lx	242lx	178lx	136lx	108lx	87lx	72lx	60lx	52lx	44lx	39lx	34lx	30lx	27lx	24lx	22lx
809.3fcd	202.3fcd	89.9fcd	50.6fcd	32.4fcd	22.5fcd	16.5fcd	12.6fcd	10fcd	8.1fcd	6.7fcd	5.6fcd	4.8fcd	4.1fcd	3.6fcd	3.2fcd	2.8fcd	2.5fcd	2.2fcd	2fcd

#### Intensities in 0° c-plane

0°	2°	4°	6°	8°	10°	12°	14°	16°	18°	20°	22°	24°	26°	28°	30°	32°	34°	36°	38°
8711	8537	8077	7379	6545	5675	4848	4094	3440	2898	2461	2106	1816	1570	1360	1172	994	828	672	525
100%	98%	93%	85%	75%	65%	56%	47%	39%	33%	28%	24%	21%	18%	16%	13%	11%	10%	8%	6%

#### Intensities in 90° c-plane

0°	2°	4°	6°	8°	10°	12°	14°	16°	18°	20°	22°	24°	26°	28°	30°	32°	34°	36°	38°
8711	8570	8165	7542	6746	5857	4973	4158	3443	2852	2374	1993	1688	1445	1232	1048	881	719	574	444
100%	98%	94%	87%	77%	67%	57%	48%	40%	33%	27%	23%	19%	17%	14%	12%	10%	8%	7%	5%

#### Intensities in 180° c-plane

0°	2°	4°	6°	8°	10°	12°	14°	16°	18°	20°	22°	24°	26°	28°	30°	32°	34°	36°	38°
8711	8571	8146	7492	6666	5779	4882	4073	3370	2796	2334	1974	1682	1444	1236	1050	874	711	562	431
100%	98%	94%	86%	77%	66%	56%	47%	39%	32%	27%	23%	19%	17%	14%	12%	10%	8%	6%	5%

#### Intensities in 270° c-plane

0°	2°	4°	6°	8°	10°	12°	14°	16°	18°	20°	22°	24°	26°	28°	30°	32°	34°	36°	38°
8711	8553	8111	7442	6633	5773	4936	4171	3505	2952	2497	2129	1830	1580	1368	1177	1004	839	685	546
100%	98%	93%	85%	76%	66%	57%	48%	40%	34%	29%	24%	21%	18%	16%	14%	12%	10%	8%	6%

Beam angle 50%	Field angle 10%	Cutoff angle 2,5%	Intensity ratio in 120° cone	Intensity ratio in 90° cone
26.9°	65.9°	87°	99.2%	97.3%